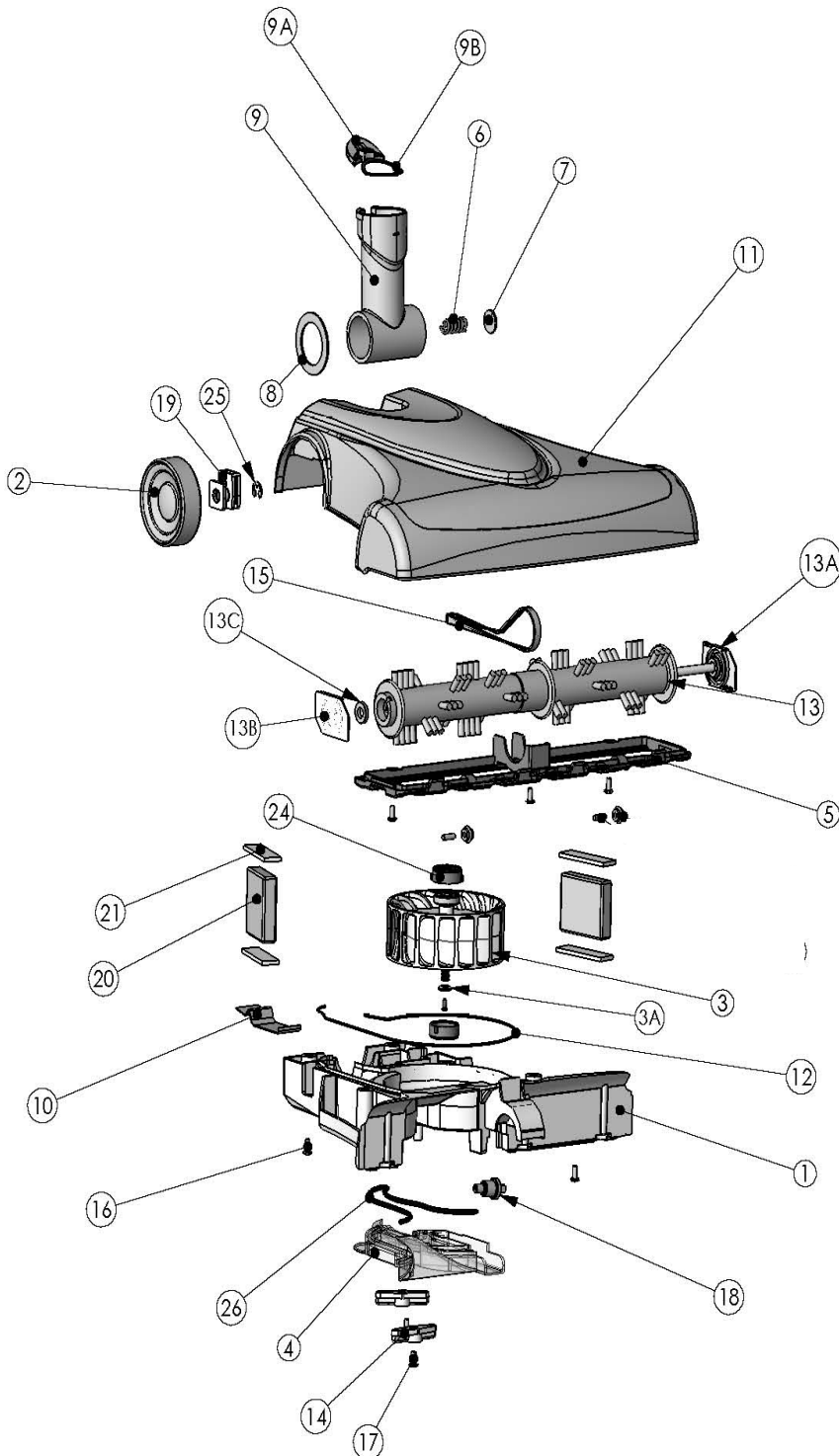


REPLACEMENT PARTS LIST

Turbocat Zoom
 # 8704 (Sapphire), # 8702 (Platinum)
 Turbocat EX
 # 8705 (Black)

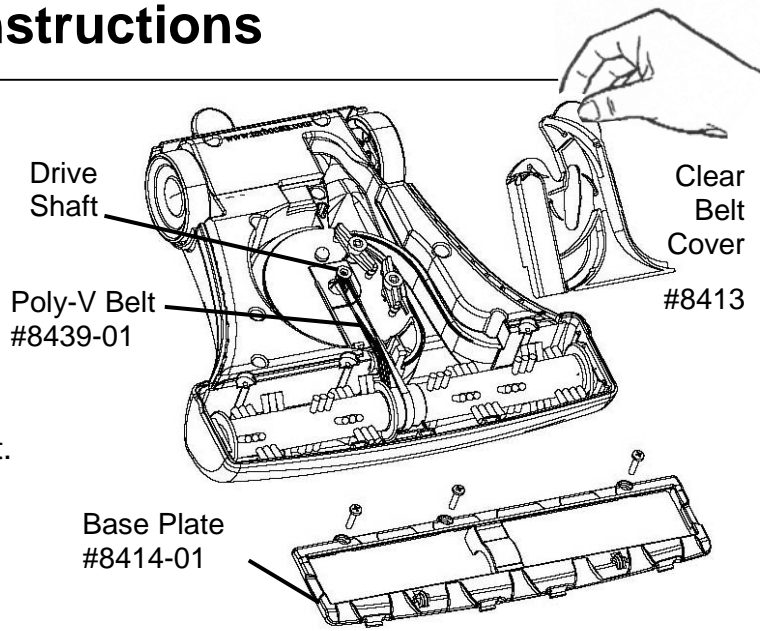


#	Description	Part #	MSRP
1	Lower Housing - Black	8412-01	14.31
1	Lower Housing - Charcoal	8412-02	14.31
2	Wheel Assembly (2) - Black	8425-01	2.98
2	Wheel Assembly (2) - Charcoal	8425-02	2.98
3	Turbine Assembly (includes 3A)	8558	35.71
	3A - Washer, Turbine Shaft	8559	.58
4	Belt Cover	8413	4.70
5	Base Plate Assembly - Black	8414-02	14.14
6	Compression Spring	8557	.77
7	Washer, Spring	5974	.72
8	Washer, Neck	5971	2.00
9	Neck Assembly - Ice Crystal (includes 9A and 9B)	8423-03	N/A
9	Neck Assembly - Platinum (includes 9A and 9B)	8423-04	13.10
9	Neck Assembly - Sapphire (includes 9A and 9B)	8423-05	13.10
9	Neck Assembly - Black (includes 9A and 9B)	8423-01	13.10
	9A - Release Button (black)	8424-01	N/A
	9A - Release Button (charcoal)	8424-02	1.97
	9B - Release Spring	5966-X	2.53
10	Spring, Neck Lock	7218	2.26
11	Top Housing - Platinum	8411-04	22.60
11	Top Housing - Sapphire	8411-05	22.60
11	Top Housing - Black	8411-01	22.60
12	Seal, Small	7224-X	1.31
13	Roller Brush Assembly (includes 13A, 13B and 13C)	8896	44.29
	13A - Shaft Support Assembly, Left	8428	9.52
	13B - Shaft Support, Right	8561	1.53
	13C - Thrust Washer	8562	.69
14	T-Latch (2)	7226-X	1.09
15	Poly-V Belt	8439-01	6.50
16	Screw, Housing (12)	7228-X	.72
17	Screw, T-Latch (2)	7230	.72
18	Idler Bearing Assembly	8556	7.76
19	Bushing, Wheel (2)	8415	5.83
20	Ballast (2)	7238	3.33
21	Foam Pad (4)	7239	.72
24	Bearing Isolator (2)	8427	3.56
25	Retaining Ring (2)	8458	2.38
26	Seal, Large	7223-X	.80

Brush Roller and Belt Assembly (#8896) Replacement Instructions

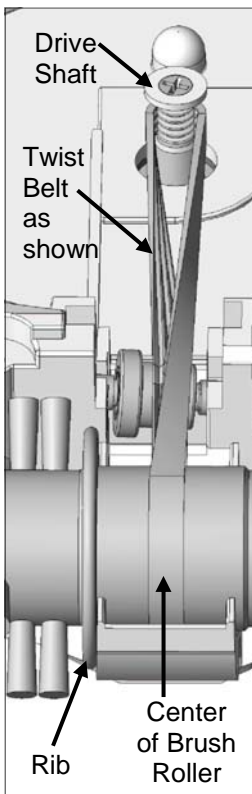
Removal Instructions

1. Turn TurboCat Zoom powerhead over so bottom is facing up. (Place on folded towel to prevent scratching and rocking.)
2. Remove Clear Belt Cover (#8413) by turning both black Latches counterclockwise until they snap into the unlocked position. Grasp the clear tab and lift.
3. Use a Philips screwdriver to remove the three Base Plate screws, then set Base Plate (#8414-01) aside.
4. Lift Brush Roller from Housing Slots and then slip Belt off Drive Shaft.



Replacement Instructions

1. To replace, position Brush Roller as shown (right). The Shaft Support with the Roller Shaft attached and the Center Molded Rib should be positioned on the left side.



2. Slip twisted Belt onto Drive Shaft (see illustration at left). Be sure belt twists as shown. Slide the metal Shaft Supports (located on either side of the Brush Roller) into the Housing Slots.

3. Replace Clear Belt Cover. Turn latches clockwise until they snap into the locked position.

4. Replace Base Plate by aligning the four base plate tabs into the four matching slots and pivot into position as shown (right).

5. Reinstall the three Philips head screws while holding the Base Plate in position.

