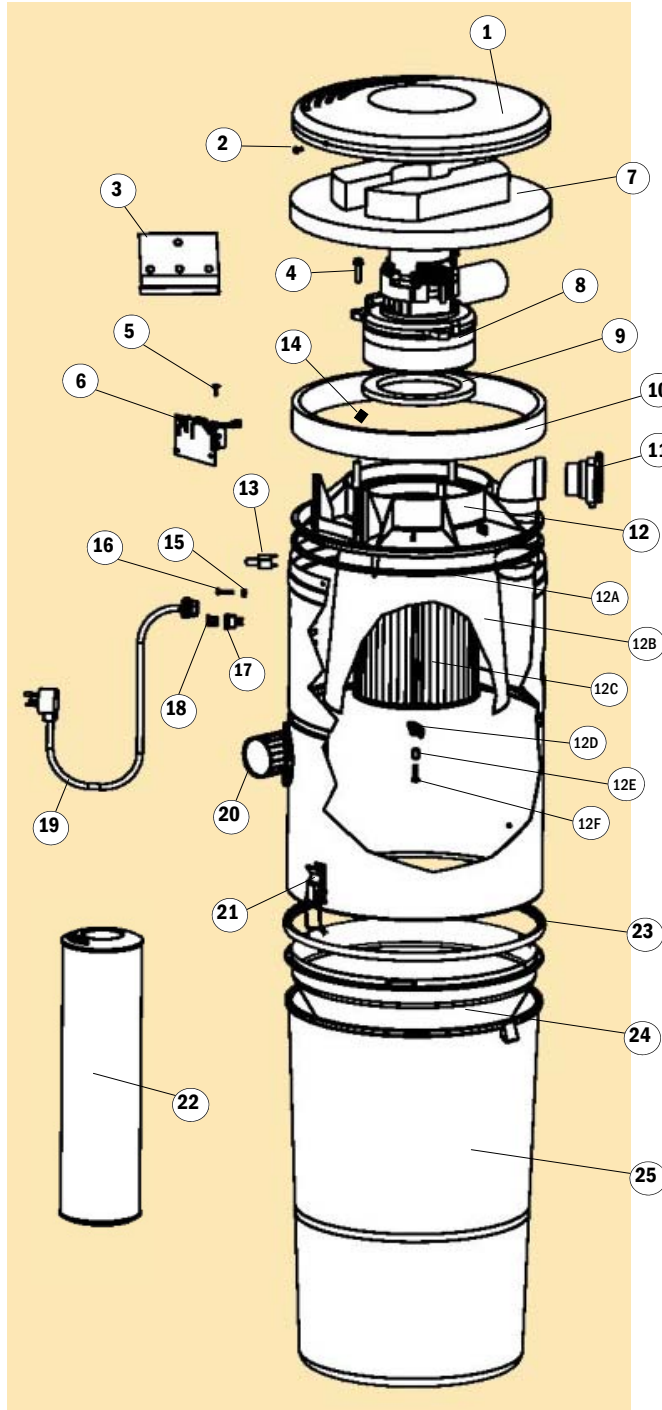


# REPLACEMENT PARTS LIST

Filtered Cyclonic Models  
 FC570 (Part # 8824)  
 FC670 (Part # 8834)



When ordering, please specify model, serial number (located on side of unit), and color of part when applicable. Manufacturer recommends the use of mufflers with all VACUFLO units.

Item #	Description (Qty.) Model FC570 Model FC670	Part #	MSRP
1	Top Cover	8174-01	23.29
2	Screw, Top Cover (2)	7064-02	.19
3	Wall Bracket	7318	1.90
4	Screw, Motor Mtg. (3)	28426-15	.38
5	Screw, P.C.B.	8148	.31
6	Relay Assembly / PC Board	8151-01	76.39
7	Acoustic Foam Insert	8523	12.15
8	FC570 Motor, 230V	8825-01	140.00
	FC670 Motor, 230V	8836-01	249.00
9	Motor Gasket	8133-01	4.77
10	Acoustic Foam Liner	8503	4.85
11	Inlet Valve Assembly	8123	21.70
12	Complete Motor Plate and Filter Assembly – includes:	8103-01	87.95
	12A – Motor Plate Gasket (3.3 ft.)	30278	1.35
	12B – Filter Shroud	8147	8.65
	12C – Filter – 7"	8106-01	24.95
	12D – T-Latch	9431	1.10
	12E – Bushing, T-Latch	8124	.20
	12F – Screw, T-Latch Mtg.	28426-16	.24
13	Circuit Protector	8756-02	10.95
14	Motor Spacer (3) - <b>FC670 only</b>	8522	.62
15	Hex Nut, Grounding Screw (3)	7108	.36
16	Screw, Grounding	7539-01	.30
17	Low-Voltage Connector	7106-01	3.40
18	Flag Terminal (2)	7105	.62
19	Power Cord	7815	12.53
20	Flexible Inlet Fitting	7092	11.19
21	Wire Loop (2)	4835	2.69
22	Muffler	8080	9.69
23	Gasket, Dirt Cone	8108-01	5.55
24	Dirt Cone	8104-01	19.37
25	Dirt Receptacle	8102-01	49.00

08/2011