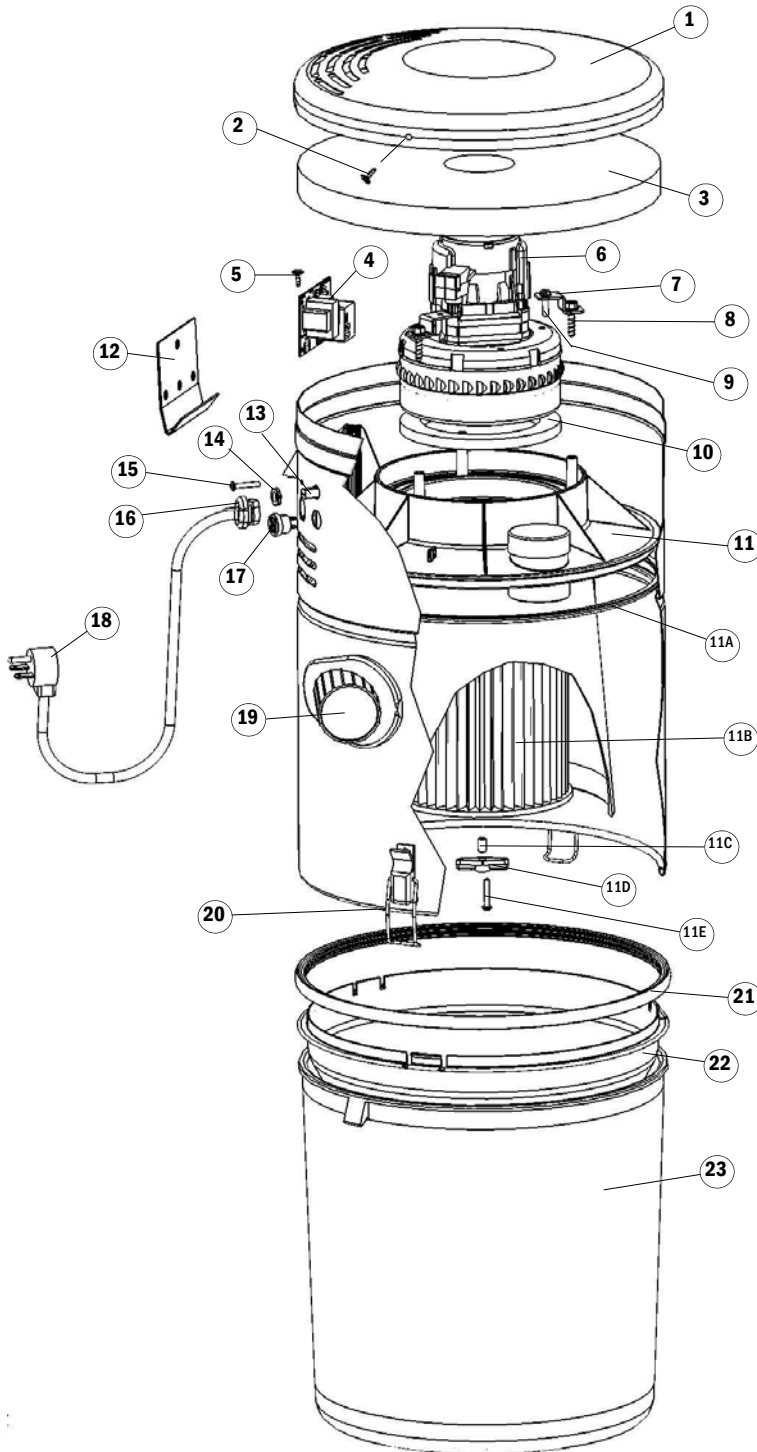


REPLACEMENT PARTS LIST



Filtered Cyclonic Model FC310

Part #8200



Item#	Description (Qty.)	Part #	MSRP
1	Top Cover	8174-01	23.29
2	Screw, Top Cover (2)	7064-02	0.19
3	Foam, Air Separator	8225	5.14
4	Relay Assembly / PC Board	7321	79.97
5	Screw, P.C.B.	8148	0.31
6	Motor, 240V	8204-01	110.00
7	Motor Bracket (3)	8202	4.86
8	Screw, Motor Bracket (3)	28426-15	0.38
9	Screw, Motor	4962-01	0.19
10	Motor Gasket	8133-01	4.77
11	Motor Plate and Filter	8103-06	87.95
	Assembly – includes:		
11A	Motor Plate Gasket 3.5'	30278	1.35
11B	Filter – 7"	8106-01	24.95
11C	Bushing, T-Latch	8124	0.20
11D	T-Latch	9431	1.10
11E	Screw, T-Latch Mtg.	28426-16	0.24
12	Wall Bracket	7318	1.90
13	Circuit Protector	7107-02	10.95
14	Nylon Nut	7693	0.27
15	Screw, Grounding	7539-01	0.30
16	Cord	7815	12.53
17	Low-Voltage Connector	7106-01	3.40
18	Power Cord	7110-01	9.36
19	Flexible Inlet Fitting	7092	11.19
20	Wire Loop (2)	4835	2.69
21	Gasket, Dirt Cone	8108-01	5.55
22	Dirt Cone	8104-01	19.37
23	Dirt Receptacle, Black	6988-01	31.00

When ordering, please specify model, serial number (located on side of unit), and color of part when applicable. Manufacturer recommends the use of mufflers with all VACUFLO units.

08/2011