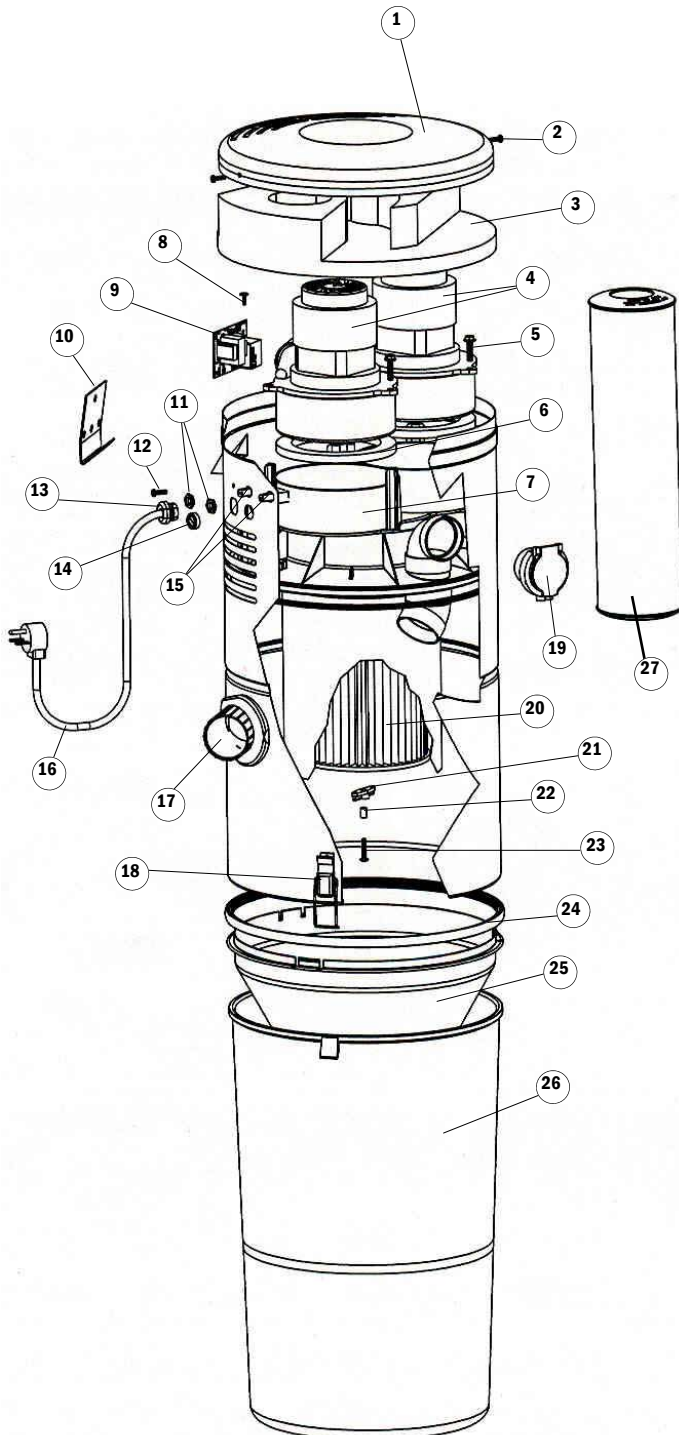


REPLACEMENT PARTS LIST



Filtered Cyclonic Model FC1550-CE
Part # 8170-CE



Item#	Description (Qty.)	Part #	MSRP
1	Top Cover	8174-01	23.29
2	Screw, Top Cover (2)	7064-02	0.19
3	Acoustic Foam Insert	8172	19.43
4	Motor, 240V (2)	8153-01	240.00
5	Screw, Motor Mtg. (6)	28426-15	0.38
6	Motor Gasket (2)	8133-01	4.77
7	Motor Plate	8103-02	110.06
8	Screw, P.C.B. Mtg.	8148	0.31
9	Relay Assembly / PC Board	8173-01	75.00
10	Wall Bracket	7318	1.90
11	Nylon Nut (2)	7693	0.27
12	Screw, Grounding	7539-01	0.30
13	Strain Relief	2478-04	3.63
14	Low-Voltage Connector	7106-01	3.40
15	Circuit Protector	7107-02	10.95
16	Power Cord	8464	14.13
17	Flexible Inlet Fitting	7092	11.19
18	Wire Loop (2)	4835	21.70
19	Inlet Valve Assembly	8123-01	20.47
20	Filter - 10"	8107-01	26.95
21	T-Latch	9431	1.10
22	Bushing, T-Latch	8124	0.20
23	Screw, T-Latch Mtg.	28426-16	0.24
24	Gasket, Dirt Cone	8108-01	5.55
25	Dirt Cone	8104-01	19.37
26	Dirt Receptacle	8102-01	49.00
27	Muffler (2)	8080	9.69
	Acoustic Foam, Exhaust Opening (not visible)	8177	2.59

When ordering, please specify model, serial number (located on side of unit), and color of part when applicable. Manufacturer recommends the use of mufflers with all VACUFLO units.

08/2011