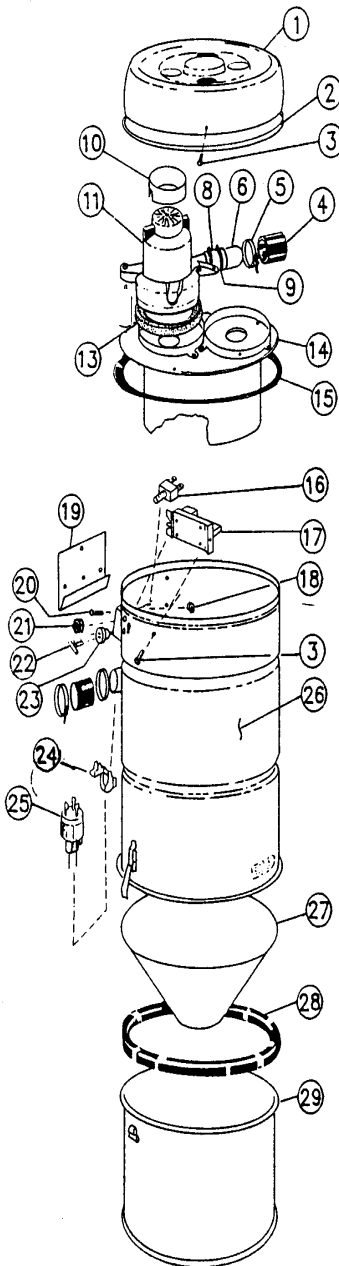


REPLACEMENT PARTS LIST



True Cyclonic Model 980

Part #7895-CE



Item#	Description (Qty.)	Part #	MSRP
1	Top Cover w/Edge Protector	7398	85.22
2	Edge Protector	7062-01	2.21
3	Screw 8-32 X 3/8" PH Pan Hd. "SEMS" (3 required)	7064-02	0.19
4	Coupling - Rubber (3 required)	1209	1.60
5	Clamp (6 required)	5156	1.39
10	Spacer Motor	7411	5.75
11	Motor - Ametek #117572-12 (right and left)	7807-01	279.00
13	Gasket, Bottom Motor (2 required)	0010	4.89
14	Motor Plate Assembly	7424	94.97
15	Gasket, Motor Plate	7405-01	10.00
16	Protector Circuit, 8 AMP 120V (2 required)	7107-02	10.95
17	Relay Assembly/PC Board	7417-CE	87.00
18	Nut 8-32 KEPS Hex (3 required)	7108	0.36
19	Bracket - Wall Mount	5519	1.90
20	Screw 8-32 X 3/4" PH Pan Hd "SEMS" (1 required)	7539-01	0.30
21	Nut, Nylon (2 required)	7693	0.27
22	Terminal 1/4" Female QC Flag (2 required)	7105	0.62
23	Connector, 2-contact	7106-01	3.40
24	Bushing - Strain Relief	2478-05	3.63
25	Cord, Power Supply 15 AMP 120V	8464	14.13
27	Cone, Plastic	7386	26.37
28	Gasket (seals shell to dirt receptacle)	7299-04	13.57
29	Dirt Receptacle	6515	140.20

When ordering, please specify model, serial number (located on side of unit), and color of part when applicable. Manufacturer recommends the use of mufflers with all VACUFLO units.

08/2011