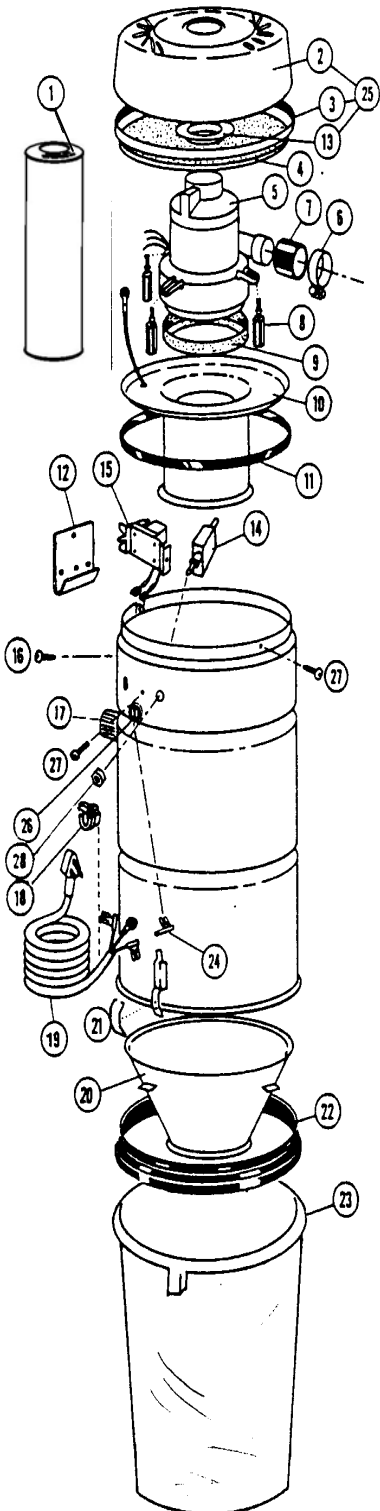


REPLACEMENT PARTS LIST



True Cyclonic Model 480

Part #7750



Item#	Description (Qty.)	Part #	MSRP
1	Muffler	8080	9.69
2	Top Cover	See #25	N/A
3	Edge Protector	7062-01	2.21
4	Acoustic Foam Ring	See #25	N/A
5	Motor - Ametek #117796-00	7751-01	179.00
	Motor Cap (not illustrated)	7726	4.99
6	Clamp (3 required)	5156	1.39
7	Coupling (1 required)	1209	1.60
9	Gasket, Bottom Motor	7697	5.41
10	Motor Plate Assembly	0002	59.77
11	Gasket, Motor Plate	0009	2.15
12	Wall Bracket	7318	1.90
13	Cooling Air Seal	See #25	N/A
14	Circuit Protector	7107-02	10.95
15	Relay Assembly/PC Board	7321	79.97
16	Screw 8-32 X 3/4" "SEMS" (1 required)	7539-01	0.30
17	Flexible Inlet Fitting	7092	11.19
18	Bushing	2478-04	3.63
19	Cord	7815	12.53
20	Cone, Plastic	3708	25.88
21	Wire Loop (2 required)	4835	2.69
22	Gasket (seals shell to dirt receptacle)	4775-06	6.81
23	Clear Dirt Receptacle	6988-02	35.00
24	Terminal - 1/4 QC Flag (2 required)	7105	0.62
25	Top Cover Assembly	7188	25.82
26	Connector, 2-contact	7106-01	3.40
27	Screw 8-32 X 3/8" "SEMS" (2 required)	7064-02	0.19
28	Nut, Nylon	7693	0.27

When ordering, please specify model, serial number (located on side of unit), and color of part when applicable. Manufacturer recommends the use of mufflers with all VACUFLO units.

08/2011