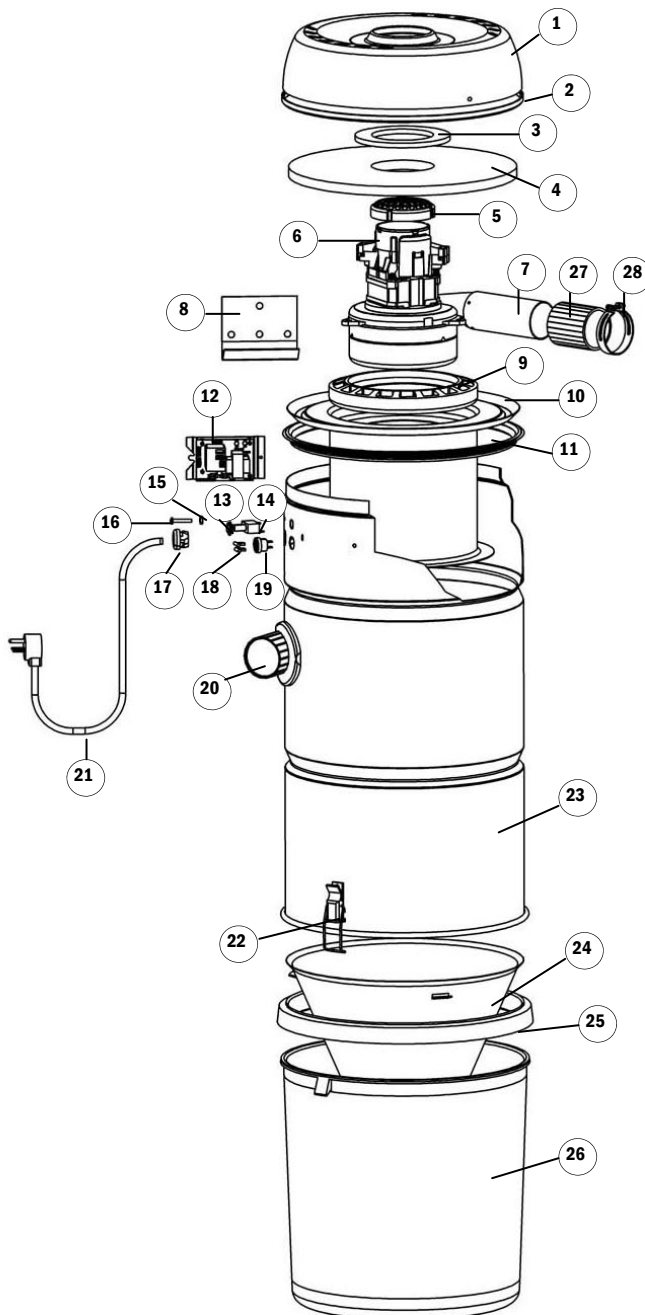


REPLACEMENT PARTS LIST



True Cyclonic Model 280

Part #7002



Item#	Description (Qty.)	Part #	MSRP
1	Top Cover Assembly	7188	25.82
2	Edge Protector (incl. with 7188)	7062-01	2.21
3	Cooling Air Seal (incl. with 7188)	7078	2.39
4	Acoustic Foam Ring	7115	6.01
5	Motor Cap	7726	4.99
6	Motor - Ametek #116657-00	7358	167.00
7	Motor Exhaust Tube	7315	included w/ 7358
8	Wall Bracket	7318	1.90
9	Gasket, Bottom Motor	7697	5.41
10	Motor Plate Assembly (gray shell)	0002	59.77
11	Gasket, Motor Plate (incl. with 0002)	0009	2.15
12	Relay Assembly/PC Board	7321	79.77
13	Nut, Nylon	7693	0.27
14	Circuit Protector	7107-02	10.95
15	Nut (3 required)	7108	0.36
16	Screw 8-32 X 3/4" "SEMS" (1 required)	7539-01	0.30
17	Bushing	2478-04	3.63
18	Terminal - 1/4 QC Flag (2 required)	7105	0.62
19	Connector, 2-contact	7106-01	3.40
20	Flexible Inlet Fitting	7092	11.19
21	Cord	7815	12.53
22	Wire Loop (2 required)	4835	2.69
23	Canister	7113-02	N/A
24	Cone, Plastic	3708	25.88
25	Gasket (seals shell to dirt receptacle)	4775-06	6.81
26	Clear Dirt Receptacle	6988-02	35.00
27	Coupling	1209	1.60
28	Clamp	5156	1.39

When ordering, please specify model, serial number (located on side of unit), and color of part when applicable.
 Manufacturer recommends the use of mufflers with all VACUFLO units.

08/2011